



**India Meteorological Department
(Ministry of Earth Sciences)**

National Bulletin No. 6 (ARB/02/2025 and BoB/07/2025)

TIME OF ISSUE: 1450 HOURS IST

DATED: 02.10.2025

FROM: INDIA METEOROLOGICAL DEPARTMENT (FAX NO. 24643965/24699216/24623220)

TO: CONTROL ROOM, NDM, MINISTRY OF HOME AFFAIRS (FAX.NO. 23093750)

CONTROL ROOM NDMA (FAX.NO. 26701729)

CABINET SECRETARIAT (FAX.NO.23012284, 23018638)

PS TO HON'BLE MINISTER FOR S & T AND EARTH SCIENCES (FAX NO.23316745)

SECRETARY, MOES (FAX NO. 24629777)

H.Q. (INTEGRATED DEFENCE STAFF AND CDS) (FAX NO. 23005137/23005147)

D.G. INDIAN COAST GUARD: (FAX No. 011-23383196)

DIRECTOR GENERAL, DOORDARSHAN (23385843)

DIRECTOR GENERAL, AIR (23421105, 23421219)

PIB MOES (FAX NO. 23389042)

UNI (FAX NO. 23355841)

D.G. NATIONAL DISASTER RESPONSE FORCE (NDRF) (FAX NO. 26105912, 2436 3260)

DIRECTOR, PUNCTUALITY, INDIAN RAILWAYS (FAX NO. 23388503)

CHIEF SECRETARY, WEST BENGAL (FAX NO. 033-22144328)

CHIEF SECRETARY, ODISHA (FAX NO. 0674-2536660)

CHIEF SECRETARY, ANDHRA PRADESH (FAX NO. 0863-2441029)

CHIEF SECRETARY, TAMIL NADU (FAX NO. 044-25672304)

CHIEF SECRETARY, PUDUCHERRY (FAX NO. 0413-2334145)

CHIEF SECRETARY, ANDAMAN & NICOBAR ISLANDS (FAX NO. 03192-232656)

CHIEF SECRETARY, MADHYA PRADESH (FAX NO. 0755-2441076)

CHIEF SECRETARY, CHHATTISGARH (FAX NO. 0771-2221206)

CHIEF SECRETARY, JHARKHAND (FAX NO. 040-23453700)

CHIEF SECRETARY, BIHAR (FAX NO. 0612-2217085)

CHIEF SECRETARY, UTTAR PRADESH (FAX NO. 0522-2239283)

CHIEF SECRETARY, GUJARAT (FAX NO. 079-23250305)

CHIEF SECRETARY, DAMAN & DIU (FAX NO. 0260-2230775)

Subject: (A) Deep Depression over Northwest and adjoining Westcentral Bay of Bengal and (B) Depression over northeast Arabian Sea

(A) Deep Depression over Northwest and adjoining Westcentral Bay of Bengal

The Deep Depression over westcentral and adjoining northwest Bay of Bengal moved north-northwestwards with a speed of 18 kmph during past 6 hours and lay centered at 1130 hrs IST of today, the 02nd October 2025 over Northwest and adjoining Westcentral Bay of Bengal near latitude 18.6°N and longitude 85.3°E, about 90 km south-southeast of Gopalpur, 140 km east-northeast of Kalingapatnam (Andhra Pradesh), 140 km south-southwest of Puri (Odisha), 230 km east-northeast of Visakhapatnam (Andhra Pradesh) and 240 km southwest of Paradip (Odisha).

It is very likely to continue to move north-northwestwards and cross Odisha and adjoining Andhra Pradesh coasts close to Gopalpur by evening/night of today, the 2nd October, 2025.

Forecast location and intensity are given in following table:

Date/Time (IST)	Position (Lat. °N/ long. °E)	Maximum sustained surface wind speed (Kmph)	Category of cyclonic disturbance
02.10.25/1130	18.6/85.3	55-65 gusting to 75	Deep Depression
02.10.25/1730	19.2/85.1	55-65 gusting to 75	Deep Depression
02.10.25/2330	19.8/84.9	50-60 gusting to 70	Deep Depression
03.10.25/0530	20.4/84.7	45-55 gusting to 65	Depression
03.10.25/1130	21.0/84.5	40-50 gusting to 60	Depression
03.10.25/2330	22.2/84.0	25-35 gusting to 45	Well Marked Low Pressure Area

Warnings:

(i) Rainfall Warning:

Andhra Pradesh: Light to moderate rainfall at most places with heavy to very heavy rainfall at a few places & extremely heavy rainfalls (≥ 20 cm) at isolated places on 2nd October and heavy rainfall at isolated places is likely over north coastal Andhra Pradesh on 3rd October.

Odisha: Light to moderate rainfall at most places with heavy to very heavy rainfall at a few places and isolated extremely heavy rainfall on 2nd and isolated heavy to very heavy at isolated places over interior Odisha on 3rd October.

Gangetic West Bengal: Light to moderate rainfall at most places with heavy to very rainfall at isolated places is very likely on 2nd & 3rd October. Thereafter rainfall would reduce becoming light to moderate rainfall at many places with heavy rainfall at isolated places on 4th & 5th October.

Sub-Himalayan West Bengal: Light to moderate rainfall at many places with heavy rainfall at isolated places is very likely on 2nd October. Rainfall would gradually increase becoming light to moderate rainfall at most places with heavy to very heavy rainfall at isolated places is very likely during 3rd to 5th October.

Jharkhand: Light to moderate rainfall at most places with heavy to very heavy rainfall at isolated places is likely on 2nd & 3rd October. Thereafter rainfall would reduce becoming light to moderate rainfall at many places with heavy rainfall at isolated places is likely on 4th & 5th October.

Chhattisgarh: Light to moderate rainfall at most places with heavy to very heavy rainfall at a few places & extremely heavy rainfall at isolated places is very likely on 2nd October. It would gradually decrease becoming light to moderate rainfall at many places with heavy to very heavy rainfall at a few places on 3rd October and heavy rainfall at isolated places on 4th October.

Bihar: Light to moderate rainfall at many places with heavy to very heavy rainfall at isolated places is very likely on 2nd October. Rainfall activity would thereafter increase becoming light to moderate rainfall at most places with heavy to very heavy rainfall at a few places & **extremely heavy rainfall** at isolated places during 3rd - 4th October. It would decrease thereafter becoming light to moderate rainfall at many places with heavy to very heavy rainfall at isolated on 5th October.

East Uttar Pradesh: Light to moderate rainfall at many places with heavy rainfall at isolated places is likely on 2nd October. Rainfall activity would increase thereafter becoming light to moderate rainfall at most places with heavy to very heavy rainfall at a few places during 3rd to 5th October and **extremely heavy rainfall** at isolated places on 4th October.

East Madhya Pradesh: Light to moderate rainfall at many places with heavy rainfall at isolated places is likely on 2nd & 4th October and heavy to very heavy rainfall at isolated places on 3rd October.

(ii) Wind warning:

- ❖ Squally wind speed reaching 55-65 gusting to 75 kmph is likely to prevail over westcentral & adjoining northwest Bay of Bengal and along and off Andhra Pradesh- Odisha- West Bengal coasts till midnight of today, the 02nd October. Winds would gradually decrease thereafter becoming 40-50 gusting to 60 kmph by 3rd October morning and decrease further thereafter.

(iii) Sea condition:

- ❖ Sea condition is very likely to be rough to very rough over westcentral & adjoining northwest Bay of Bengal and along & off Andhra Pradesh-Odisha-West Bengal coasts till afternoon of 3rd October.

(iv) Fishermen warnings:

Fishermen are advised not to venture into

- ❖ Westcentral & adjoining northwest Bay of Bengal and along & off Andhra Pradesh-Odisha-West Bengal coasts till evening of 3rd October.

(v) Impact Expected and Action Suggested due to heavy rain and strong winds (Odisha, North Andhra Pradesh, West Bengal, Chhattisgarh, Jharkhand, Bihar, Uttar Pradesh and East Madhya Pradesh)

Impact expected:

- ❖ Breaking of tree branches. Strong wind and rain may damage plantation, horticulture and standing crops.
- ❖ Minor damage to kutcha houses/walls, huts and roads due to strong winds and heavy rain.
- ❖ Road and rail traffic may be affected due to heavy rain.
- ❖ There could be localised landslides, mudslides, landslips, water logging, inundation and flooding over low lying areas.
- ❖ Occasional reduction in visibility due to heavy rainfall.
- ❖ Surface transport and helicopter services may get affected.

Action suggested:

- ❖ People are advised to keep a watch on the weather for worsening conditions and be ready to move to safer places accordingly.
- ❖ Take safe shelters; do not take shelter under trees, as there could be lightning.
- ❖ In case of expected lightning, unplug electrical/ electronic appliances, immediately, get out of water bodies and keep away from all the objects that conduct electricity.
- ❖ Tourism and recreational activities to be regulated.
- ❖ Surface transport and helicopter services to be regulated.
- ❖ Drive with caution on wet roads.
- ❖ Onshore and offshore activities to be cautious.

24 hours cumulative realised heavy rainfall (≥ 7 cm) ending at 0830 hours IST of today the 2nd October, 2025 is placed at Annexure-1.

(B) Depression over northeast Arabian Sea

The Depression over northeast Arabian Sea remained practically stationary during last three hours and lay centered at 1130 hours IST of today, the 02nd October, 2025 over the same region near latitude 20.8°N and longitude 67.9°E, about 210 km west-southwest of Porbandar, 210 km southwest of Dwarka, 290 km south-southwest of Naliya, and 460 km south of Karachi. It is likely to move southwestwards towards central Arabian Sea during next 3 days.

(i) Rainfall warning:

Saurashtra & Kutch: Light to moderate rainfall at many places with heavy rainfall at isolated places is likely over coastal districts on 2nd October.

(ii) Wind warning:

- ❖ Squally wind speed reaching 40-50 gusting to 60 kmph is very likely to prevail over Northeast Arabian Sea, adjoining areas of northwest Arabian Sea and along & off North Gujarat coast till 3rd October and decrease gradually thereafter.
- ❖ Squally wind speed reaching 45-55 gusting to 65 kmph is very likely to prevail over central Arabian Sea till 3rd October and over westcentral Arabian Sea during 4th -5th October.

(ii) Sea condition:

- ❖ Sea condition is very likely to be rough to very rough over Northeast Arabian Sea, adjoining areas of northwest Arabian Sea and along & off North Gujarat coast till 3rd October and gradually improve thereafter.
- ❖ Sea condition is very likely to be rough to very rough over central Arabian Sea till 3rd October and over westcentral Arabian Sea during 4th -5th October.

(iii) Fishermen warnings:

Fishermen are advised not to venture into

- ❖ Northeast Arabian Sea, adjoining areas of northwest Arabian Sea and along & off North Gujarat coast till 3rd October
- ❖ Westcentral Arabian Sea and adjoining areas of Eastcentral Arabian Sea during 2nd – 5th October.

Next Message will be issued at 2030 hrs IST of today, the 2nd October, 2025.

(M. Sharma)
Scientist-E, RSMC & IMD, New Delhi

Copy to: ACWC Kolkata/ACWC Chennai/ACWC Mumbai/CWC Bhubaneswar/CWC Vishakhapatnam/Meteorological Centres- Port Blair/Hyderabad/Bhopal/Ahmedabad/Raipur/Amravati/

Annexure-I

24 hours cumulative realised heavy rainfall (≥ 7 cm) ending at 0830 hours IST of today the 2nd October, 2025 is given below:

Odisha: Bahanga (dist Balasore) 11, Balasore (dist Balasore) 9, Soro (dist Balasore) 9, Nilgiri (dist Balasore) 9, Bhograi (dist Balasore) 8, Krishnaprasad (dist Puri) 8, Gobindpur (dist Balasore) 8, Hatadihi (dist Keonjhar) 7, Jajpur Pto (dist Jajpur) 7, Jajpur (dist Jajpur) 7,

Gangetic West Bengal: Digba (dist East Midnapore) 10, Sagar Island (dist South 24 Parganas) 9, Basirhat(pt) (dist North 24 Parganas) 7, Contai (dist East Midnapore) 7,

Jharkhand: Rajdah(dist dhanbad) 21, Nandadih (dist Giridih) 14, Karmatand (dist Jamtara) 14, Sikatia (dist Deoghar) 11, Giridih (dist Giridih) 11, Narayanpur (dist Jamtara) 10, Chandwa (dist Latehar) 9, Lohardaga (dist Lohardaga) 9, Shilaichak (dist Chatra) 9, Zrs Dumka (dist Dumka) 8, Barkisuriya(dist Giridih) 8, Gobindpur (dist Dhanbad) 8, Jamtara (dist Jamtara) 7, Dumri (dist Giridih)7, Jamtara Fmo (dist Jamtara) 7, Palganj (dist Giridih) 7,

Sub-Himalayan West Bengal & Sikkim: Buxaduar (dist Alipurduar) 19, Chalouni Tea Estate (dist Jalpaiguri) 14, Rongo (dist Kalimpong) 13, Jhallong (dist Kalimpong) 11, Indong T.e. (dist Jalpaiguri) 9, Zurrantee Tea Estate(dist Jalpaiguri) 8, Gopalpur Tea Estate (dist Alipurduar) 8, Subhasini Tea Estate (dist Alipurduar) 7, Hasimara (dist Alipurduar) 7, Soongachi Tea Estate (dist Jalpaiguri) 7, Patkapara Tea Estate (dist Alipurduar) 7,

East Uttar Pradesh: Nichlaul (dist Maharajganj) 12, Bansgaon (dist Gorakhpur) 11, Dhanghata (dist Sant Kabir Nagar) 10, Gorakhpur (dist Gorakhpur) 9,

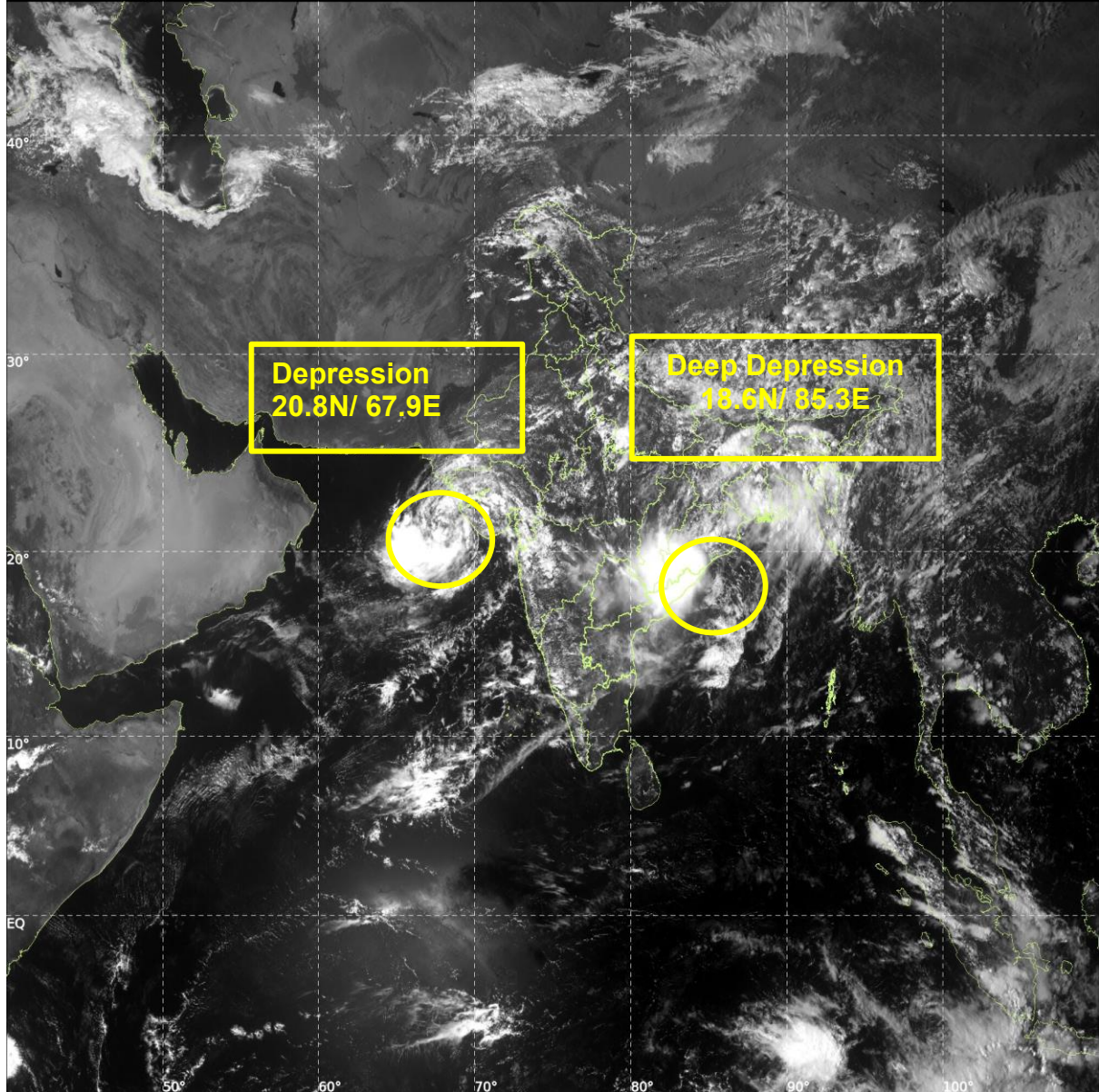
East Madhya Pradesh: Nowrozabad (dist Umaria) 10, Budhar (dist Shahdol) 9, Pali (dist Umaria) 8, Raipura (dist Panna) 7, Jabalpur (dist Jabalpur) 7



INSAT-3DS IMG, Visible Count @ 0.65 μm
GMT:02-10-2025/(0830-0857) IST:02-10-2025/(1400-1427)
L1C MERCATOR (LINEAR STRETCH: 0.5%)

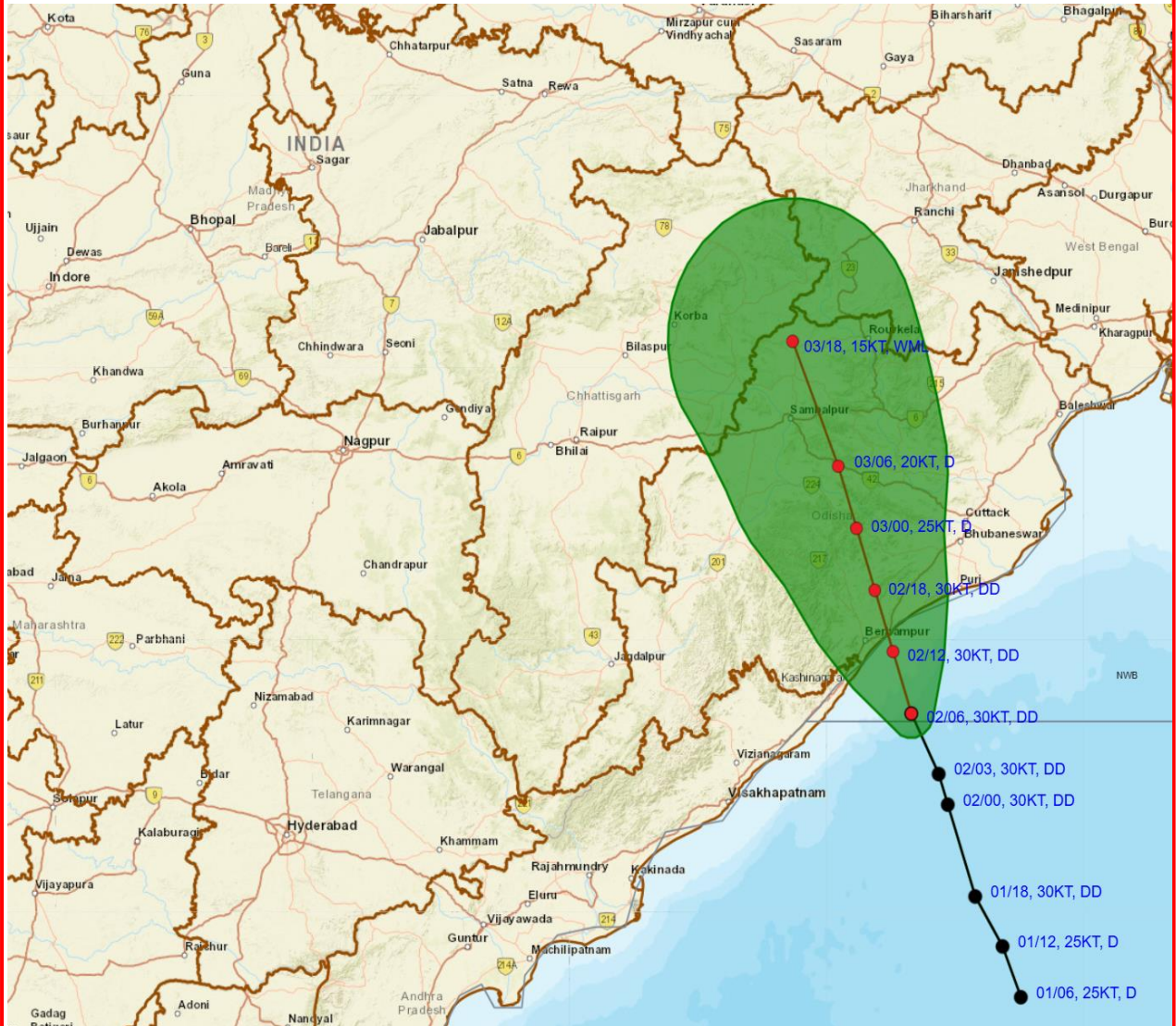
61

346





OBSERVED AND FORECAST TRACK OF DEEP DEPRESSION OVER NORTHWEST AND ADJOINING WESTCENTRAL BAY OF BENGAL BASED ON 0600 UTC (1130 IST) OF 2ND OCTOBER, 2025



DATE/TIME IN UTC

1 KT = 1.85 KMPH

IST = UTC + 0530

L: LOW PRESSURE AREA

WML: WELL MARKED LOW PRESSURE AREA

D: DEPRESSION (17-27 KT)

DD: DEEP DEPRESSION (28-33 KT)

CS: CYCLONIC STORM (34-47 KT)

SCS: SEVERE CYCLONIC STORM (48-63 KT)

VSCS: VERY SEVERE CYCLONIC STORM (64-89 KT)

ESCS: EXTREMELY SEVERE CYCLONIC STORM (90-119 KT)

SuCS: SUPER CYCLONIC STORM ≥ 120 KT

● LESS THAN 34 KT

○ 34-47 KT

● ≥ 48 KT

— OBSERVED TRACK

— FORECAST TRACK

▲ CONE OF UNCERTAINTY



OBSERVED AND FORECAST TRACK ALONGWITH QUADRANT WIND DISTRIBUTION OF DEEP DEPRESSION OVER NORTHWEST AND ADJOINING WESTCENTRAL BAY OF BENGAL BASED ON 0600 UTC (1130 IST) OF 2ND OCTOBER, 2025



DATE/TIME : IN UTC
IST : UTC + 0530
KT : NAUTICAL MILE S/HOUR = 1.85 KM/HOUR
LPA : LOW PRESSURE AREA
WML : WELL MARKED LOW PRESSURE AREA
D : DEPRESSION (17-27 KT)
DD : DEEP DEPRESSION (28-33 KT)
CS : CYCLONIC STORM (34-47 KT)
SCS : SEVERE CYCLONIC STORM (48-63 KT)
VSCS : VERY SEVERE CYCLONIC STORM (64-89 KT)
ECS : EXTREMELY SEVERE CYCLONIC STORM (90-119 KT)
SuCS : SUPER CYCLONIC STORM (≥120 KT)

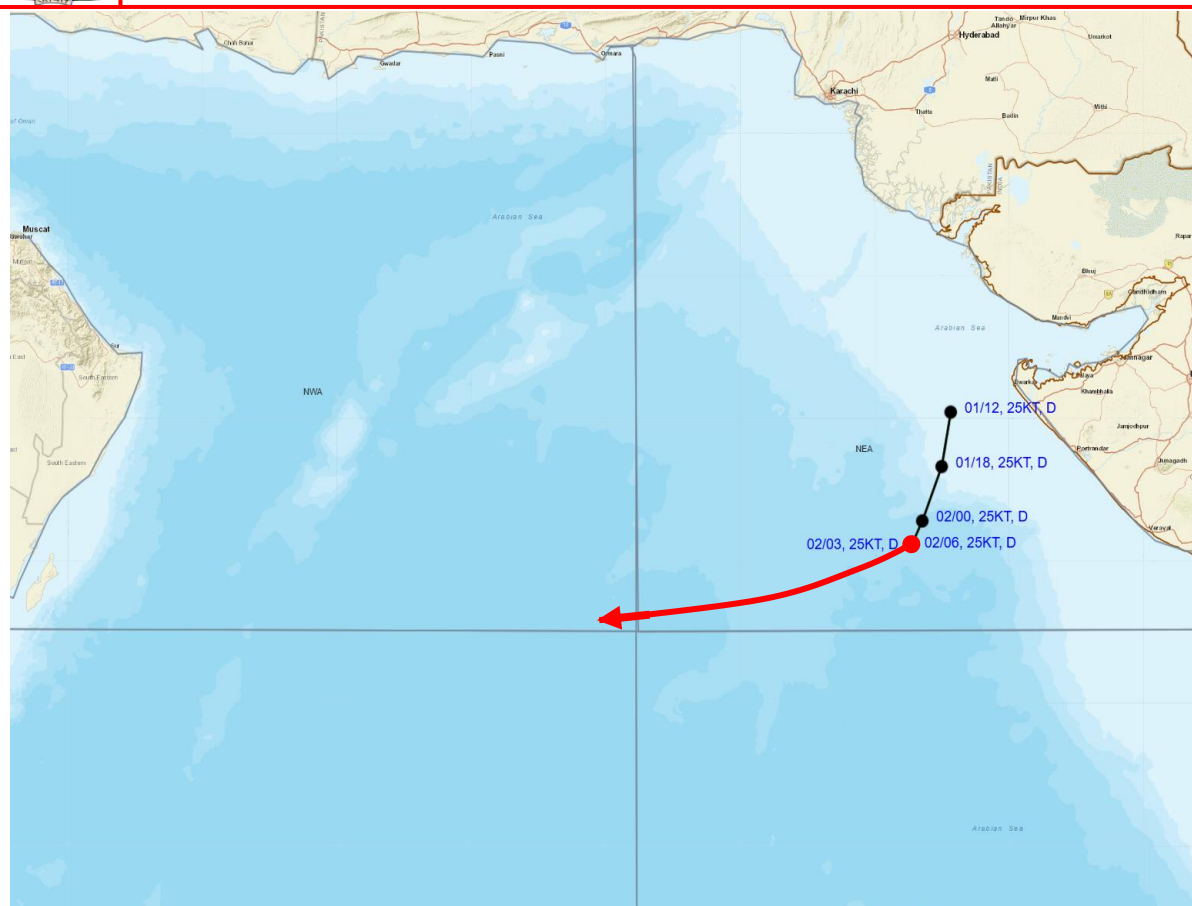
● LESS THAN 34 KT
● 34-47 KT
● ≥ 48 KT
— OBSERVED TRACK
— FORECAST TRACK
▲ CONE OF UNCERTAINTY
AREA OF MAXIMUM SUSTAINED WIND SPEED:
■ 28-33 KT (52-61 KMPH)
■ 34-49 KT (62-91 KMPH)
■ 50-63 KT (92-117 KMPH)
■ ≥ 64 KT (≥118 KMPH)

IMPACT OVER THE SEA

MSW (knot/kmph)	Impact	Action
28-33 (52-61)	Very rough seas	Total suspension of fishing operations
34-49 (62-91)	High to very high seas	Total suspension of fishing operations
50-63 (92-117)	Very high seas	Total suspension of fishing operations
≥ 64 (≥118)	Phenomenal	Total suspension of fishing operations



**OBSERVED AND FORECAST TRACK OF DEPRESSION OVER NORTHEAST
ARABIAN SEA BASED ON 0600 UTC (1130 IST) OF 2ND OCTOBER, 2025**



DATE/TIME IN UTC

IST = UTC + 0530

L: LOW PRESSURE AREA

WML: WELL MARKED LOW PRESSURE AREA

D: DEPRESSION (17-27 KT)

DD: DEEP DEPRESSION (28-33 KT)

CS: CYCLONIC STORM (34-47 KT)

SCS: SEVERE CYCLONIC STORM (48-63 KT)

VSCS: VERY SEVERE CYCLONIC STORM (64-89 KT)

ESCS: EXTREMELY SEVERE CYCLONIC STORM (90-119 KT)

SuCS: SUPER CYCLONIC STORM ≥ 120 KT

1 KT = 1.85 KMPH



LESS THAN 34 KT



34-47 KT



≥ 48 KT



OBSERVED TRACK

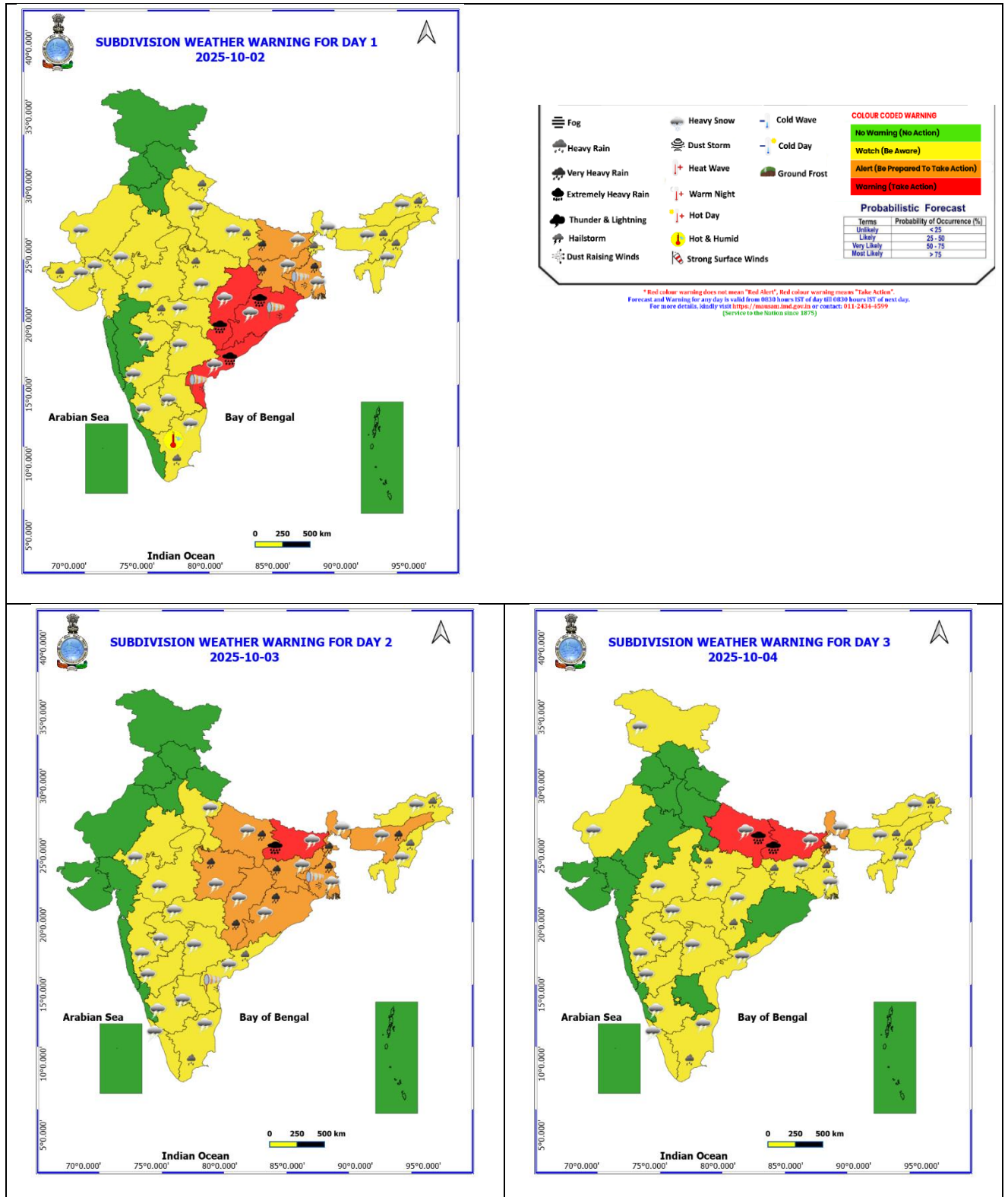


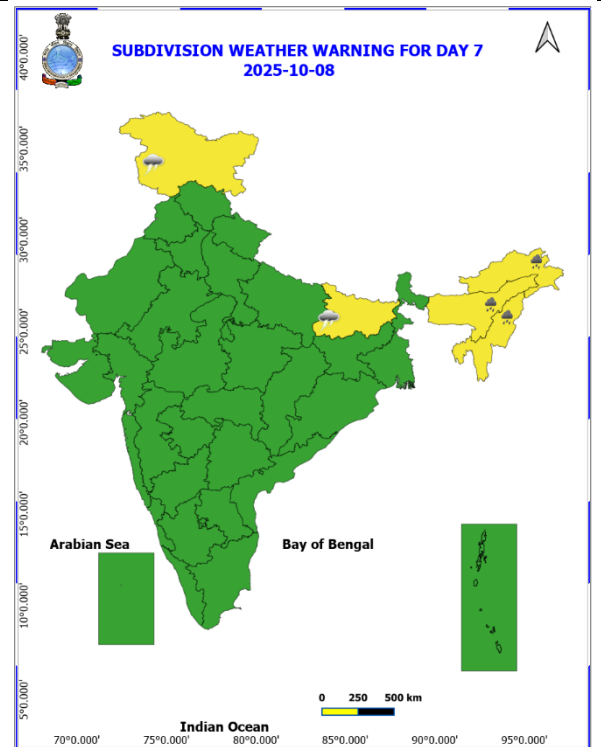
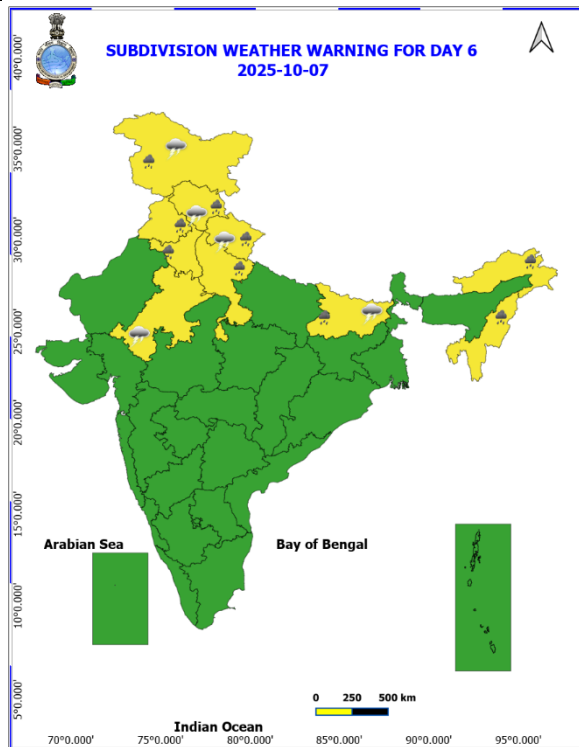
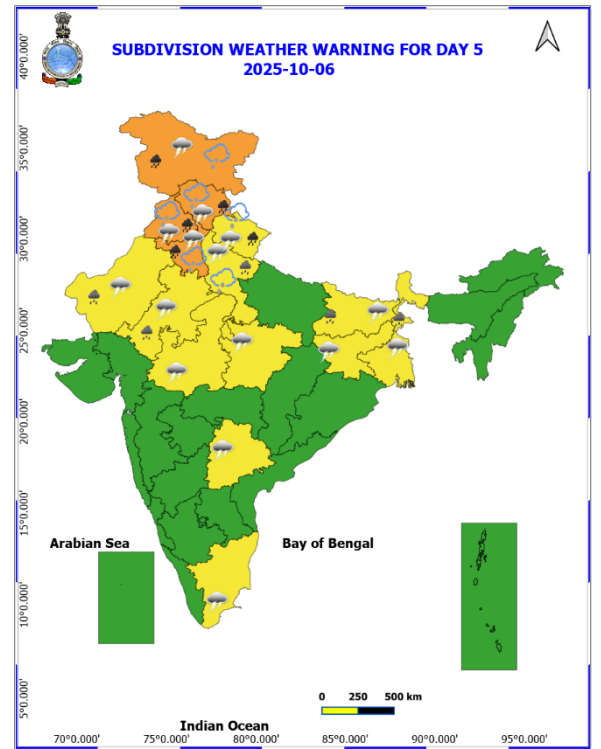
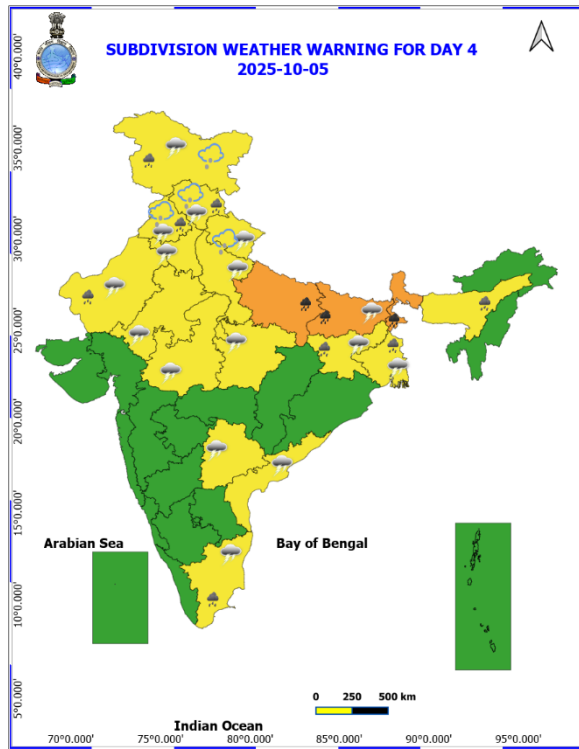
FORECAST TRACK



CONE OF UNCERTAINTY

Weather Warning Graphics





Fishermen Warning Graphics

